

RALLY ARMOR MUD FLAP INSTALLATION INSTRUCTIONS

FOR 2010+ SUBARU LEGACY AND OUTBACK MODELS

Please read the instructions thoroughly before attempting to mount the mud flaps. Rally Armor always recommends professional installation. For high resolution images please visit <http://www.rallyarmor.com>

To protect your Rally Armor mud flap set, care must be taken during parking and reversing. Check wheel clearance after installation, especially vehicles outfitted with non-OEM offset wheels and suspensions. Rally Armor is not responsible for damage or loss of installed flaps.

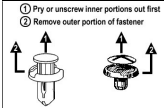


Each mud flap set contains 4 flaps for all 4 tires of the vehicle.

Recommended tools: Offset, ratcheting or stubby Phillips screwdriver, small flat head screwdriver.
Rally Armor **2010+ Subaru Legacy and Outback** mud flap mounting hardware consists of:

Quantity	Hardware Item	Item ID
14	Polygon Edge Clips	PolCl
2	Small Washers	SmWash
12	Large Washers	Wash
2	Short Screws	1SS
12	Long Screws	1.5SS
2	Rear Mounting Brackets	HMFS14-BRKT-DR; HMF14-BRKT-P

To remove stock fasteners



Important Notes

Cautionary Tip: The hardware is strong and self threading but over-tightening the clips is not advised.

Installation Tip: To ease installation and avoid damage to existing OEM clips during removal, a well lit, climate controlled installation environment is recommended.

To the installer: Please return these instructions to the customer after installation. Always test and check wheel clearance before returning vehicle.

To the customer: Retain these instructions after installation. They may be necessary for installing other optional parts or removal of this accessory.

Front Mud Flap Installation

- **(Figure A)** Park vehicle on an even surface. Turn the steering wheel towards the side you are working on to gain access to the wheel well area. Remove the four OEM fender liner retainers clips.
- **(Figure B)** Pull liner away to gain access to inner fender and place three clips over each of the mounting points as shown. Replace liner.
- **(Figure C)** Position the front mud flap with logo facing the rear of the vehicle. Using a long screw (1.5SS) and a large washer (Wash), loosely bolt the mud flap to each mounting point. Do not tighten mounting points. Adjust mud flap before tightening down for proper alignment.



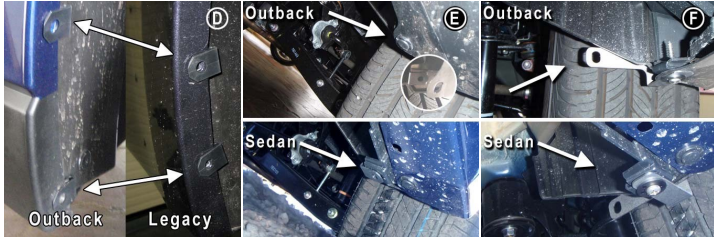
Important Notes

Align outer edge of the flap by incrementally adjusting the side to side, lower/upper portion of the flap and walking away from the vehicle until the flap is perpendicular to even ground. Tighten all mounting screws only until snug against washer. Do not over tighten.



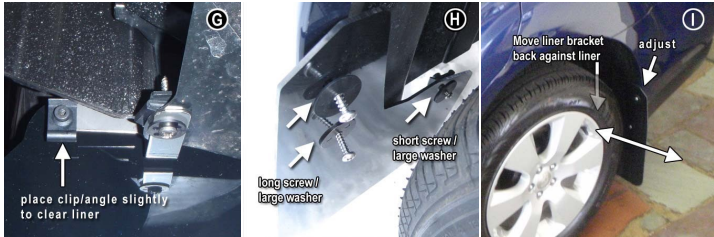
Rear Mud Flap Installation

- **(Figure D)** Slide two supplied clips (PoICl) over stock mounting points in bumper (Outback and Legacy shown).
- **(Figure E)** From the rear of the vehicle, remove the existing OEM fastener on Outback (not labeled) and place supplied clip (PoICl) on mounting point underneath bumper skin as shown.
- **(Figure F)** Loosely secure bracket to vehicle by placing a long screw (1.5SS) and small washer (SmWash) through the smaller mounting hole on the bracket and in to the clip as shown. Do not fully tighten. The mounting points are slotted to allow for movement and final alignment of flap.



- **(Figure G)** Place clip (PoICl) over the inner most mounting point of the bracket. Position the clip at an angle. It will touch the liner on Outback model. This is normal.
- **(Figure H)** Position the rear mud flap with logo facing the rear of the vehicle. Install a long screw (1.5SS) and a large washer (Wash), through the mud flap mounting point in to each of the two outer bumper mounting points. Use a small screw (1SS) and a large washer (Wash) on the innermost bracket mounting point. Adjust mud flap and bracket first before tightening all mounting points.
- **(Figure I)** Align the entire assembly starting with the outer edge of the flap. Incrementally shift the lower/upper portions of the flap by walking away from the vehicle and adjusting until the flap is perpendicular to even ground. Tighten all mounting screws until snug against washers. Push inner flap/bracket assembly back against wheel liner to ensure that it clears the tire.

Fully tighten bracket to vehicle mounting points until snug and bracket does not shift.



All content including text, graphics, and logos are property of Rally Armor LLC.