



- Part number SES1836TT
2008 Mitsubishi Lancer 2.0L
4 cyl.
- 1- Axle back exhaust system
 - 1- Grommet hanger (#20089)
 - 2- m10 flange nuts and bolts (#17001)
 - 2- m8 x 16mm hex bolts (#6018)
 - 1- SES exhaust sticker
 - 1- Instruction

Congratulations! You have just purchased the best engineered, dyno-proven axle back exhaust system available.

Please check the contents of this box immediately.

Report any defective or missing parts to the Authorized Injen Technology dealer you purchased this product from. Before installing any parts of this system read the instructions thoroughly. If you have any questions regarding installation please contact the dealer you purchased this product from. Installation DOES require some mechanical skills. A qualified mechanic is always recommended.

*Do not attempt to install the intake system while the engine is hot.

The installation may require removal of radiator fluid line that may be hot.

Injen Technology offers a limited lifetime warranty to the original purchaser against defects in materials and workmanship. Warranty claims must be handled through the dealer from which the item was purchased.

Injen Technology 244 Pioneer Place Pomona, CA 91768 USA

Please check the contents of this box immediately.

Note: The installation of this axle back exhaust system does require mechanical skills. Injen strongly recommends that this system be installed by a professional mechanic.

Start the installation by removing a portion of the exhaust system from the rear axle-back.



Figure 1 Line up the new plate hanger to the center of the rear axle and use the two m8 bolts.

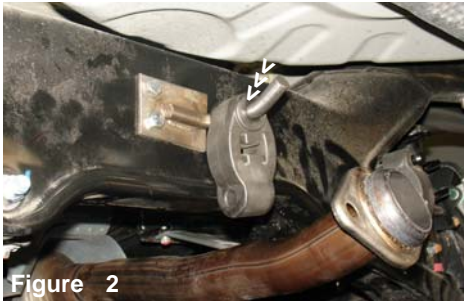


Figure 2 The hanger is installed and one of the unused grommets is re-hung on the hanger.

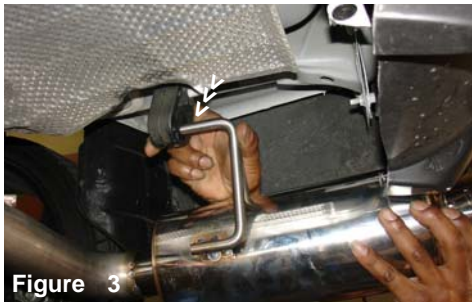


Figure 3 Raise the axle-back in place and insert the first hanger on the existing rear grommet.



Figure 4 Push the second hanger near the flange into the second grommet as shown above.



Figure 5 align the flange to the stock donut flange and use the stock spring loaded bolts and m10 nuts supplied.



Figure 6 Align the entire axle-back for best fit and tighten the nuts and bolts, keep tip away from the bumper.