

RALLY ARMOR MUD FLAP INSTALLATION INSTRUCTIONS

FOR 1998-2002 SUBARU FORESTER MODELS

Please read the instructions thoroughly before attempting to mount the mud flaps. Rally Armor always recommends professional installation. For high resolution images please visit <http://www.rallyarmor.com>

To protect your Rally Armor mud flap set, care must be taken during parking and reversing. Check wheel clearance after installation, especially vehicles outfitted with non-OEM offset wheels and suspensions. Rally Armor is not responsible for damage or loss of installed flaps.



Each mud flap set contains 4 flaps for all 4 tires of the vehicle.

Recommended tools: Offset, ratcheting or stubby Phillips screwdriver, small flat head screwdriver, rust penetrating spray, razor blade (optional)

REQUIRED OEM PARTS FOR INSTALLATION:

Rally Armor **SF 1998-2002 Subaru Forester** mud flap mounting hardware consists of:

Quantity	Hardware Item	Item ID	To remove stock fasteners	Screw Size Reference
8	Polygon Edge Clips	PolCl		
4	Round Edge "S" Clips	RoCl		
4	Small Washers	SrnWash		
12	Large Washers	Wash		
2	Short Screws	.75SS		
2	Medium Screws	1SS		
8	Long Screws	1.5SS		
2	Rear Mounting Brackets	HMF13-BRKT		

Cautionary Tips:

On older SF Foresters, it is recommended that all existing OEM hardware be generously sprayed with anti-rust / liquid penetrating spray to ease removal. The supplied hardware is strong and self-threading but over-tightening the clips is not advised.

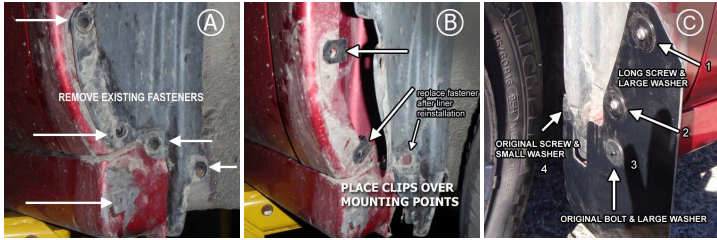
Installation Tip: To ease installation and avoid damage to existing OEM clips during removal, a well lit, climate controlled installation environment is recommended.

To the installer: Please return these instructions to the customer after installation. Always test and check wheel clearance before returning vehicle.

To the customer: Retain these instructions after installation. They may be necessary for installing other optional parts or removal of this accessory.

Front Mud Flap Installation

- **(Figure A)** Park vehicle on an even surface. Turn the steering wheel towards the side you are working on to gain access to the wheel well area. Remove the 5 OEM fender liner retainer clips/screw/bolts. Retain this hardware as some of it will be re-used.
- **(Figure B)** Pull liner away to gain access to inner fender and place a Polygon clip over each of the two mounting points as shown. Replace liner, and replace inner OEM fastener.
- **(Figure C)** Position the front mud flap with logo facing the rear of the vehicle. Using a long screw (1.5SS) and a large washer (Wash), loosely bolt the mud flap to each two upper mounting points (1 & 2). For the side skirt mounting point (3) use the original bolt, replacing the metal washer with a large plastic washer. For inner point (4) utilize the original screw with a small washer. Do not tighten mounting points. Adjust mud flap before tightening down for proper alignment.



Important Notes

Align outer edge of the flap by incrementally adjusting the side to side, lower/upper portion of the flap and walking away from the vehicle until the flap is perpendicular to even ground. Tighten all mounting screws only until snug against washer. Do not over tighten.



Rear Mud Flap Installation

- **(Figure D)** Remove existing rear hardware and plastic shield
- **(Figure E)** Slide two supplied Round edge "S" clips (SC) over stock mounting points in bumper. On late SF model bumpers trimming on the inside of the bumper lip may be required. Existing hardware can also be utilized to mount flap. Place supplied Polygon clip (PolC) on inner mounting point.
- **(Figure F)** Loosely secure bracket to vehicle by placing a short screw (.75SS) and small washer (SmWash) through the smaller mounting hole on the bracket and in to the clip as shown. Slide polygon clip over large slotted portion of the bracket.

